
Advancing Entrepreneurship, Innovation and Technology Transfer

Sethuraman “Panch” Panchanathan

Executive Vice President and Chief Research and Innovation Officer

ASU Knowledge Enterprise Development

September 8, 2017



ASU Charter

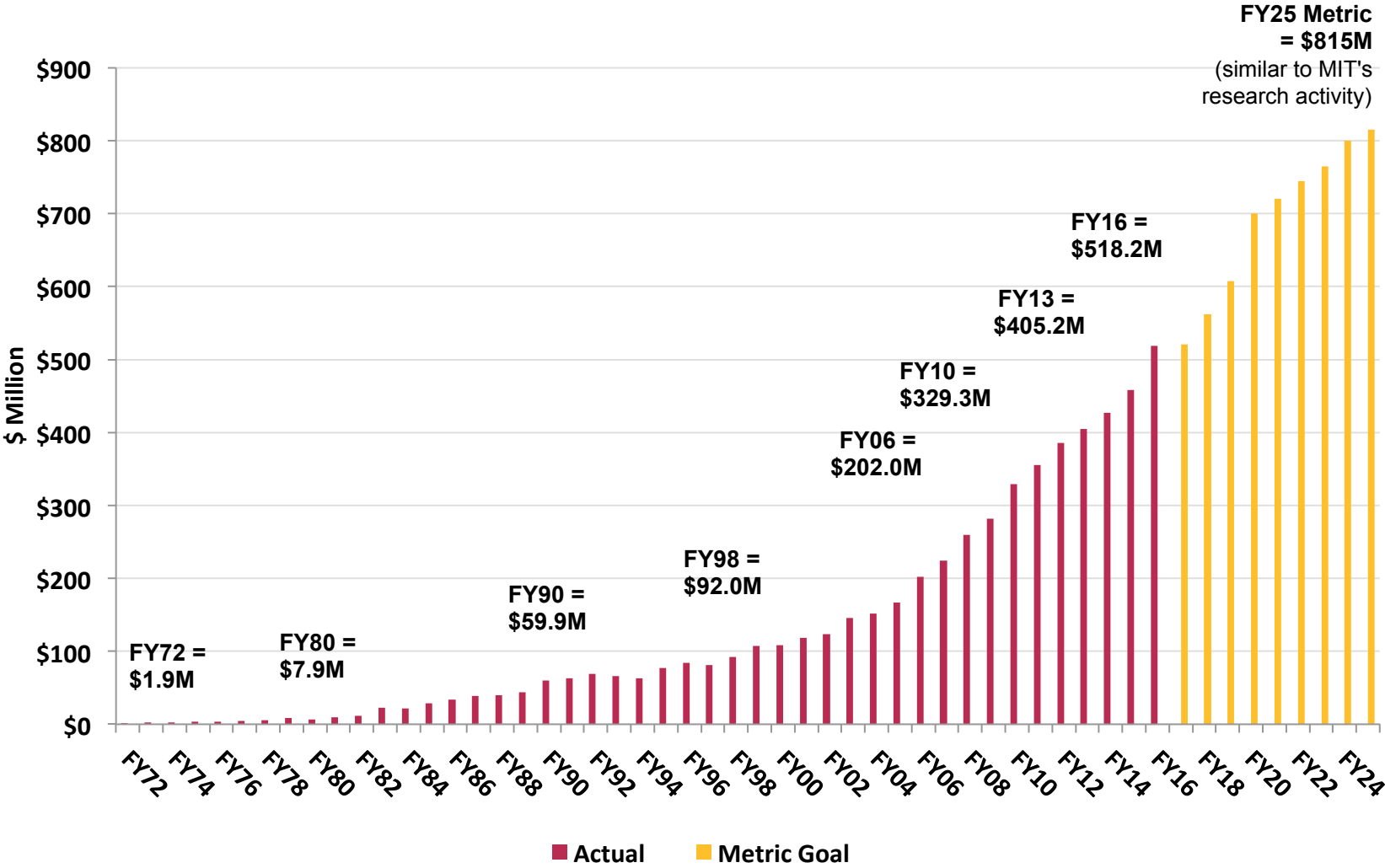
ASU is a **comprehensive public research university**, measured not by whom it excludes, but by **whom it includes** and how they **succeed**; advancing **research and discovery** of public value; and assuming **fundamental responsibility** for the economic, social, cultural, and overall health of the **communities** it serves.



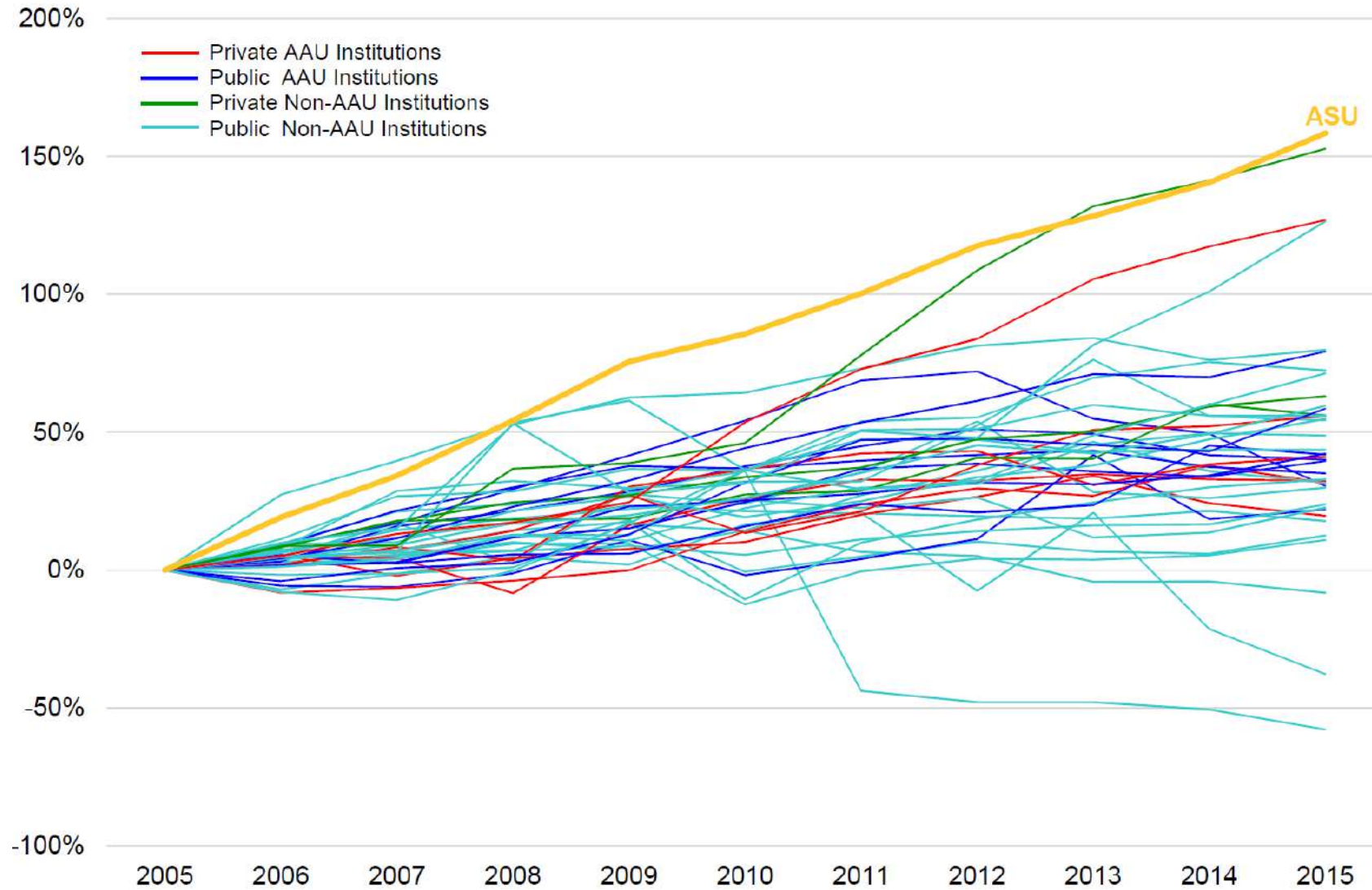
We reimagined a number of existing structures to drive a culture of innovation and created a mindset of perpetual innovation on all fronts

Enhanced Research Competitiveness

Research expenditures have **doubled** every six to eight years



2005-2015 Cumulative Percent Change in Total Research Expenditures for Institutions without a Medical School



National Rankings

Total Research Expenditures: **49** of **876** ahead of



Total Research Expenditures among Institutions without a Medical School:

10 of **724** ahead of



Non-Medical School Expenditures: **27** of **876** ahead of



National Rankings

Social Sciences: **5th** ahead of



Cornell University

UCLA



Humanities: **12th** ahead of



Cornell University

Earth Sciences: **3rd** ahead of



National Rankings

HHS (including NIH) Funded Expenditures among Institutions without a Medical School: **10 of 409** ahead of



Carnegie Mellon University

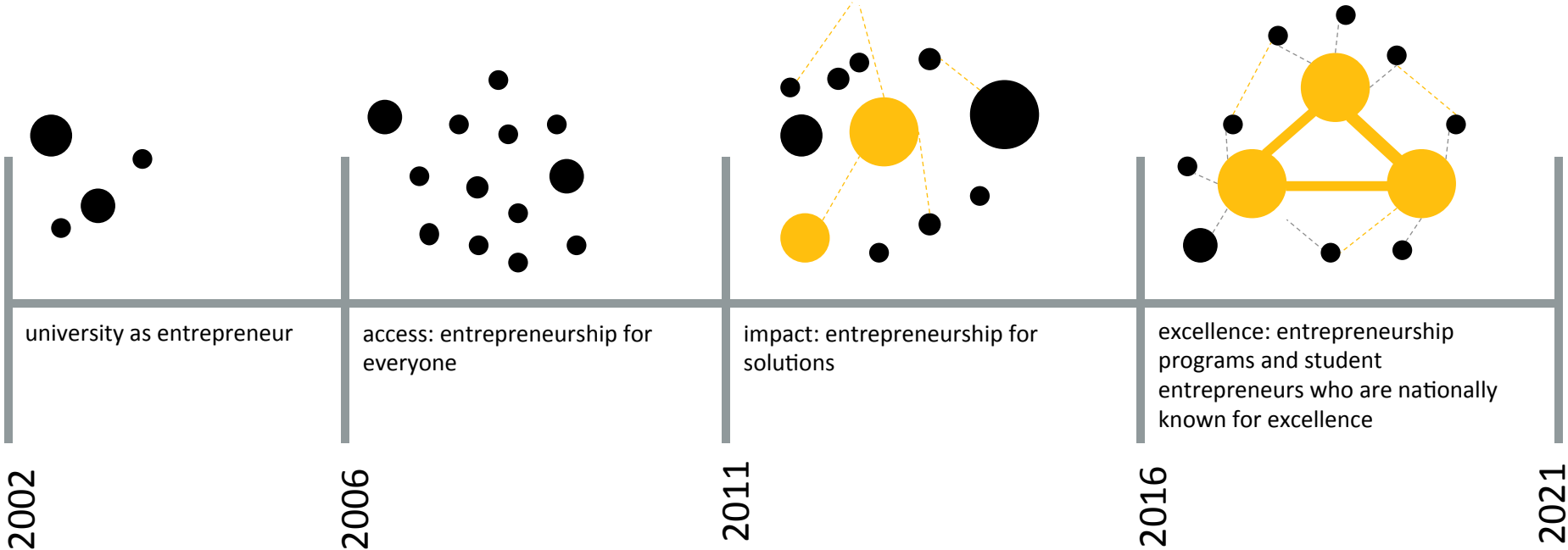
NSF Funded Expenditures: **25 of 586** ahead of



DOE Funded Expenditures: **24 of 366** ahead of



Evolution of Entrepreneurship @ ASU



ENTREPRENEURIAL

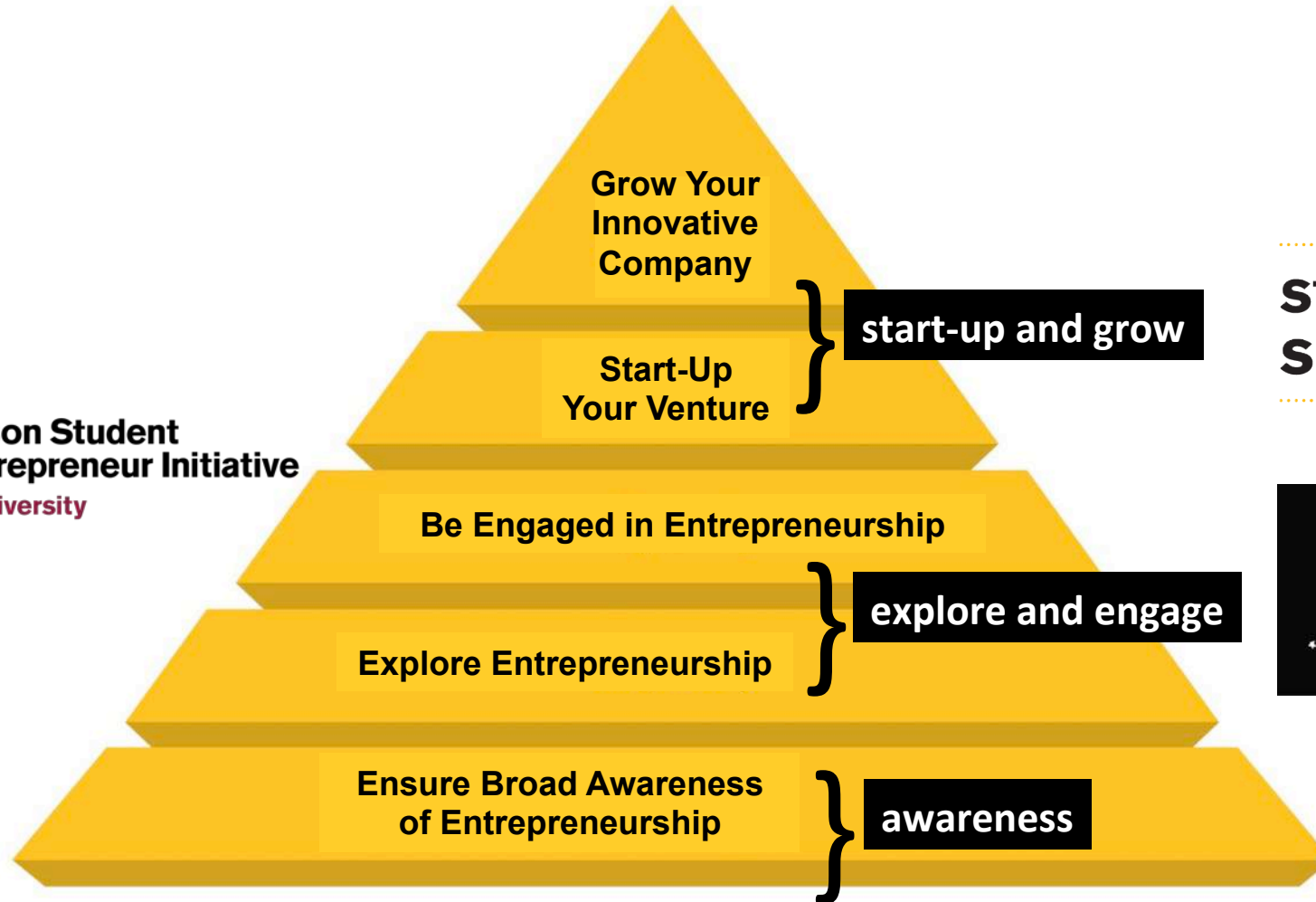


SUN DEVILS

ENTREPRENEURIAL
Market

Building a Culture of Entrepreneurship

ASU Edson Student
Entrepreneur Initiative
Arizona State University



startup
school

ASU Innovation
Challenge

changemaker
central@ASU

Student Entrepreneurial Pride



[33 Buckets: How one life powered by ASU can change millions](#)

Faculty Entrepreneurial Efforts

Cody Friesen: Fluidic Energy™, co-founder

- Sustainable energy storage solutions
- \$150+ million in funding from strategic, venture and government sources
- Over \$10M in ARPA-E grants
- IFC investment of \$7M

Zero Mass Water / Zero Mass Labs

- Produce potable water using solar energy
- Water supplies could be produced locally & affordably
- Pilot projects in developing countries with scarce water resources



100,000,000

Vision 2025: Changing Lives

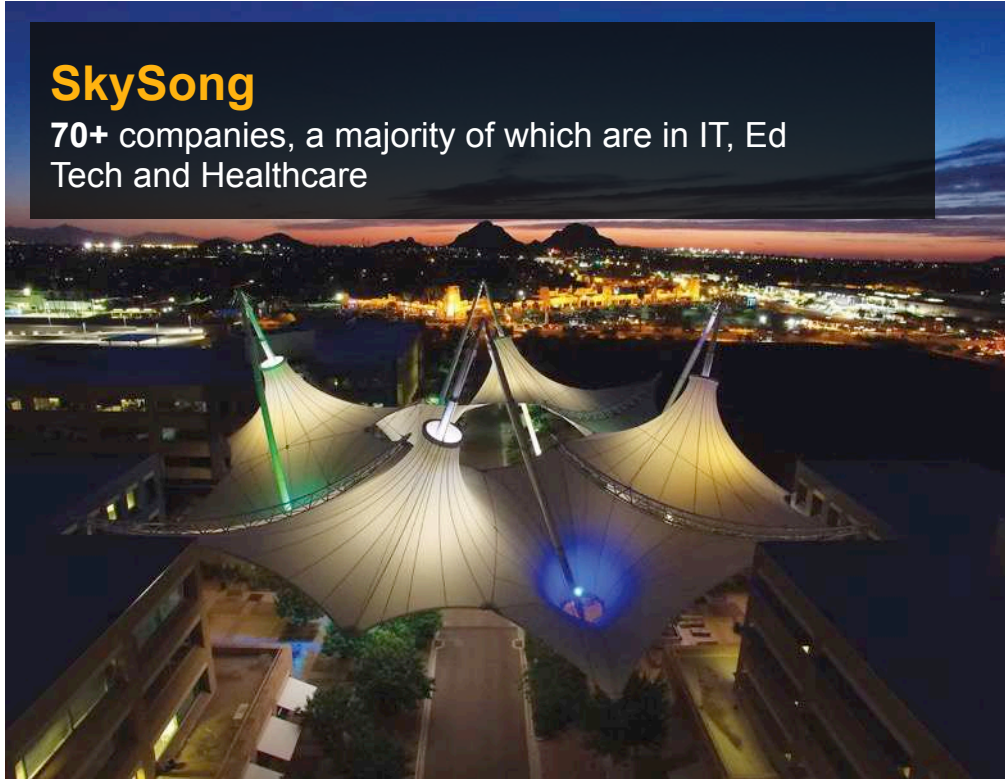
The Fluidic Energy team has rallied around the ambitious goal of delivering electricity to more than 100 million people by 2025. Follow our progress.

4,035,000 TODAY

ASU's Entrepreneurial Engine is Vibrant

SkySong

70+ companies, a majority of which are in IT, Ed Tech and Healthcare



Student Entrepreneurs

300+ startups
1,200+ students

Faculty Entrepreneurs

100 startups based on ASU faculty IP with over \$600+ million in venture funding.

Technology Transfer in the last decade

2,500 invention disclosures
400+ U.S. patents
More than \$35 million in license and options income

ASU Innovation Campuses:



Research Park



Polytechnic campus



Stadium District



West Campus



Thunderbird



AZ Health Solutions Corridor

Entrepreneurship Ecosystem Partners



Community Collaboration

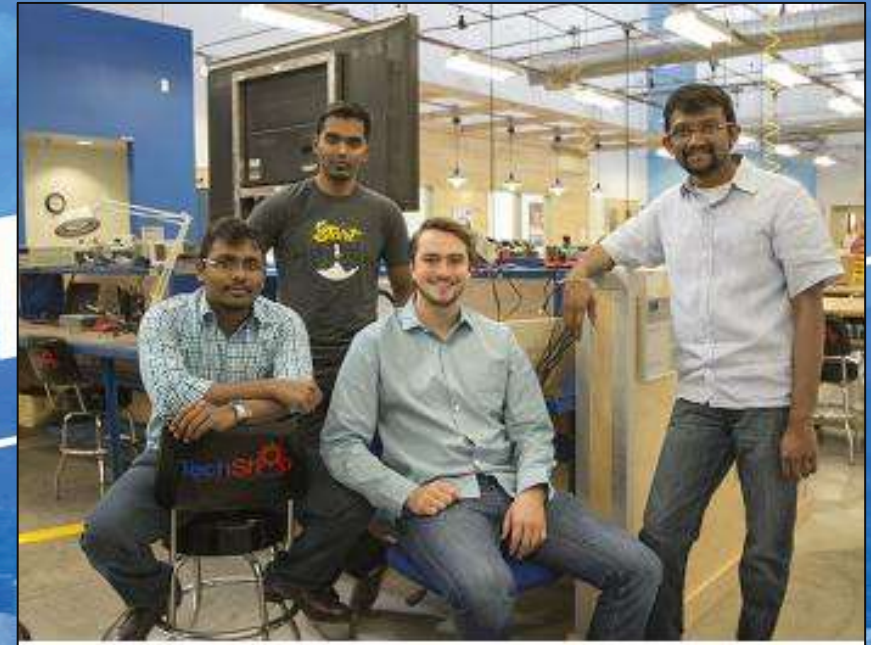
- ASU **partners** with community-based local and regional organizations
- Partnerships include delivering programming, referring resources, and **promoting Phoenix-wide initiatives**
- Partners like Ashoka, include ASU in national networks of practice



Major Funders

Ewing Marion
KAUFFMAN
Foundation





RISE
OF THE
REST
ROAD TRIP
WITH STEVE CASE

**“one of the most
radical redesigns
in higher learning...”**
-Newsweek



**#1 in the U.S.
for innovation**

#1 ASU #2 Stanford #3 MIT

- U.S. News & World Report, 2016 and 2017



ASU Hackathon



Luminosity: A Platform for Leading-edge Student Projects

AI driven glasses for the blind



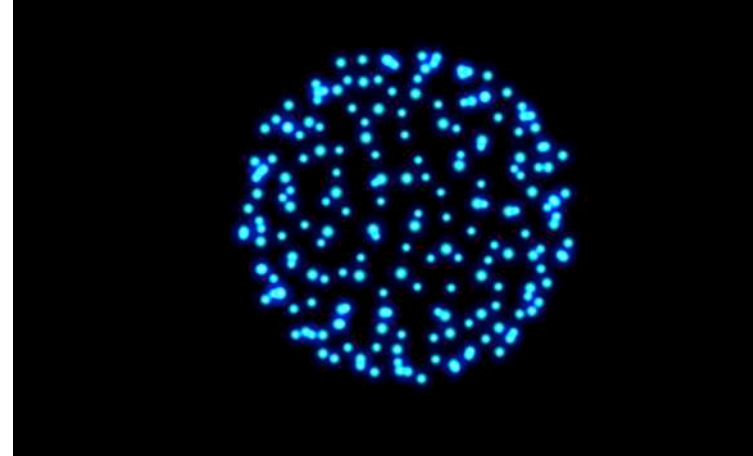
Safety escort Drone prototype



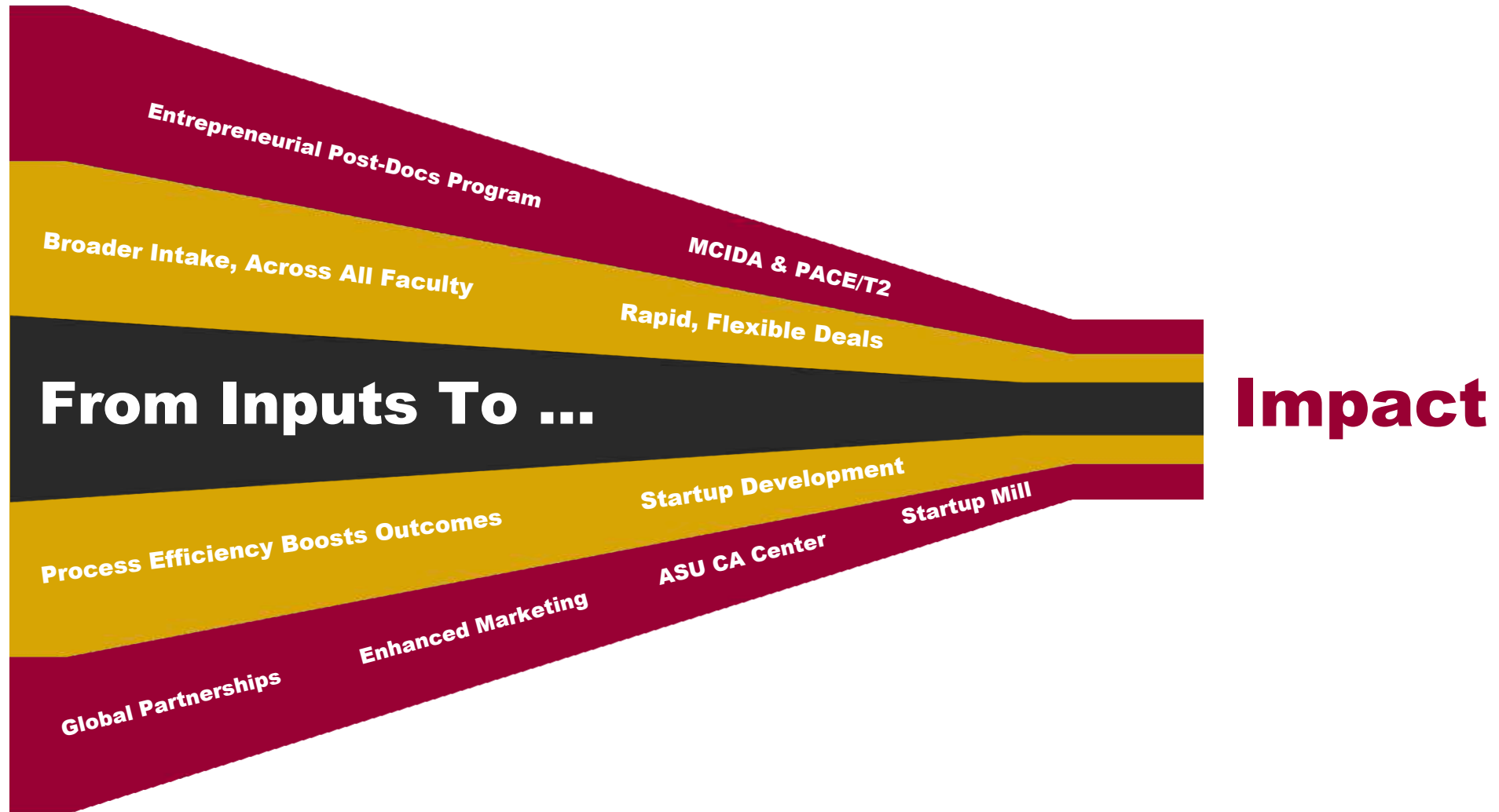
Lab2Moon



Atlas

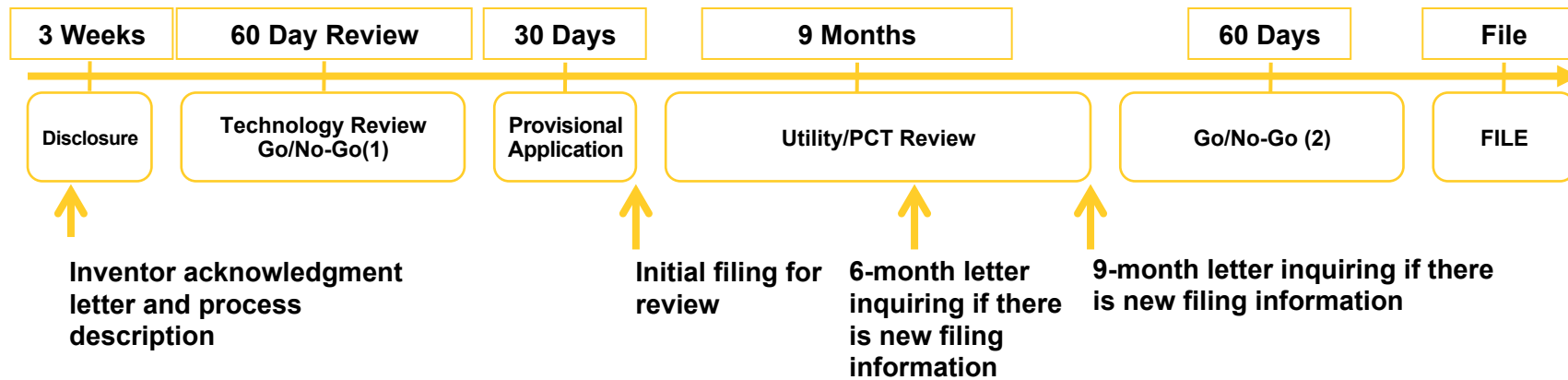


Tech Transfer Growth Model

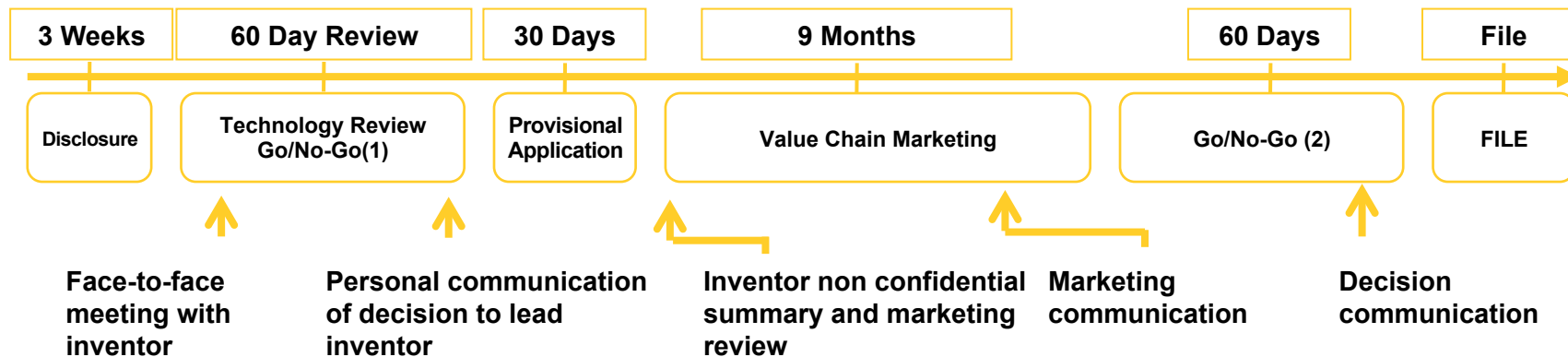


Inventor Touch Points

Patent Prosecution



Business Development



Five Years of AUTM Rankings

- AzTE / ASU rankings per \$10M in research expenditures among all institutions with more than \$300M in expenditures (n=~70)

	FY10	FY11	FY12	FY13	FY14
Licenses & Options	7 th	5 th	6 th	8 th	8th
Startups	20 th	2 nd	5 th	7 th	5th
Invention Disclosures	6 th	9 th	6 th	3 rd	5th
Issued Patents	46 th	41 st	34 th	12 th	14th

ASU #21 in Tech Transfer Rankings



Research universities are one of the strongest assets
America can use to compete in the age of innovation.



Thank you

