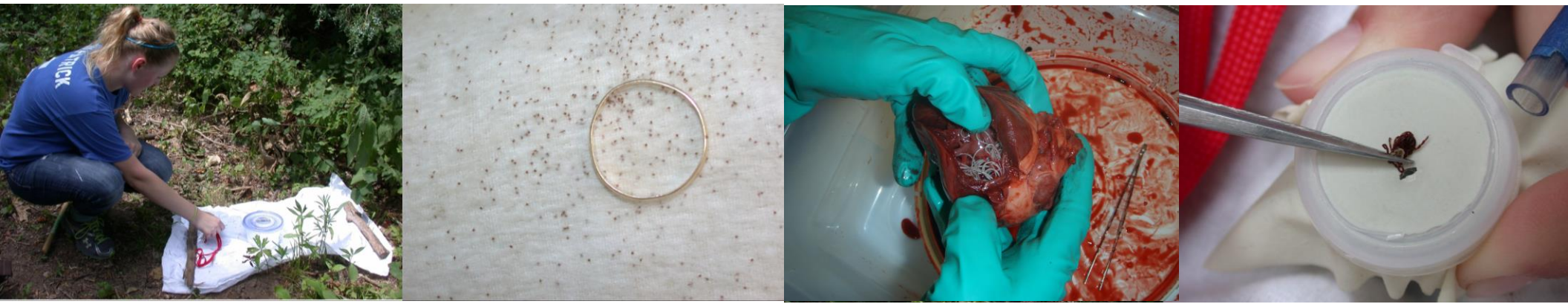


Medical Parasitology BIOL 4930

Saint Louis University at Reis Biological Station

Summer 2023 May 22nd to June 10th

Instructor: Dr. David Ashley



All Courses are 4 Credit Hours

Session Runs From May 22, 2023 to June 10, 2023

Cost: Approximately \$3200 for Tuition and \$350 for Food.

All buildings have AC.

Transportation to and from the Field Station is provided.

For more information contact Dr. Wood (robert.wood@slu.edu)



Medical Parasitology

This course will be an introduction to the major protozoal, helminth, and arthropod parasites of humans. Course activities will deal with their systematics, life cycles, epidemiology, pathogenesis, treatment, and control. Much time will be spent discussing the **Neglected Tropical Diseases** (trypanosomiasis, Chagas disease, schistosomiasis, echinococcosis, dracunculiasis, filariasis, and soil-transmitted helminths). Laboratory and field activities will investigate prevalence, life cycles, and ecology of parasites of wildlife.



NEGLECTED TROPICAL DISEASES
are a group of preventable and treatable parasitic, viral, bacterial, fungal, and non-communicable diseases that **affect more than one billion people globally.**

Accessible version https://www.cdc.gov/globalhealth/ntd/resources/ntd_factsheet_2022.pdf

Neglected tropical diseases (NTDs) cause devastating health and economic problems.
NTDs cause disability that hinders school attendance, care of families, and earning wages.
They disrupt productivity in already unstable economies.



Registration Now Open