



SAINT LOUIS
UNIVERSITY™

— EST. 1818 —

BANDER CENTER FOR MEDICAL BUSINESS ETHICS

PRESENTS

Risk, Freedom and Health:

DATA JUSTICE AND
CYBERSECURITY





Risk, Freedom and Health:

**DATA JUSTICE AND
CYBERSECURITY**



Wednesday, August 31, 2022 | 8AM-6PM CST

Chase Park Plaza, Royal Sonesta Hotel and Conference Center
212 N. Kingshighway Blvd., Saint Louis, MO 63108

Conference Cost - \$100

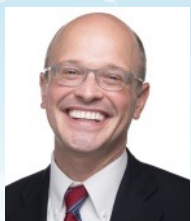
An in-person and online program exploring data justice and cybersecurity in healthcare. Join us at the Chase Park Plaza for this one-day insightful conference regarding the ways that contemporary tradeoffs between personal data, artificial intelligence, justice and security risks will shape the future of healthcare.

If you are a healthcare professional, a business leader, an educator, an entrepreneur or a concerned citizen, you are invited to join us for this exciting event.

REGISTER NOW

6:00–8:00AM	Registration
7:30–8:30AM	Breakfast
8:00–11:45AM	Morning Session – Starlight Ballroom
8:00–8:05	Fred P. Pestello, Ph.D., President of Saint Louis University
8:05–8:10	Christine Jacobs, M.D., F.A.A.F.P., Dean and Vice President for Medical Affairs, Saint Louis University
8:10–8:15	Introduction and Welcome – Jason Keune, MD, MBA, FACS
8:15–8:20	INTRO SESSION 1: Moderator Brandy M. Fox, PhD candidate in Health Care Ethics
8:20–8:40	“Data Governance as a Structure to Promote Respect for Persons and Advance the Common Good” – Mark Repenshek, PhD
8:40–9:00	“What is Secure Enough?” – Terry Ziemniak, MS, FACHE, ISC2
9:00–10:00	Panel 1: Moderator Brandy M. Fox, PhD candidate in Health Care Ethics
10:00–10:20AM	Break
10:20–10:25	INTRO SESSION 2: Moderator Martin Fitzgerald, PhD candidate in Bioethics and Philosophy
10:25–10:45	“Downstream Effects of Overturning Roe v. Wade: Data Privacy, Security, and Justice” – Michael S. Sinha, MD, JD, MPH
10:45–11:05	“Some Speculations on the Implications of “Modern Events” for Security and Privacy Practitioners” – Mark Seiden, MS
11:05–12:05	Panel 2: Moderator Martin Fitzgerald, PhD candidate in Bioethics and Philosophy
12:05–1:15PM	Lunch – Zodiac Room
1:00–1:15	“Therapeutic Horticulture: Nature and Well-being” – Jeanne Carbone
1:15–3:00PM	Afternoon Session – Starlight Ballroom
1:15–1:20	INTRO SESSION 3: Moderator Valerie de Wandel, JD, PhD candidate in Health Care Ethics
1:20–1:40	“Healthcare Delivery Through Big Data Technologies, Risks and (BIO)-ethical Dilemmas” – Benjamin Anom, D. Bioethics
1:40–2:00	Student Abstract Presentations: <ul style="list-style-type: none"> • “Transformative Experiences: Deep Brain Stimulation, Informed Consent, and Implications for The Ethical Use of Patient Data” – Natalie Hardy • “Patient, Physician, and Data Scientist Perspectives on Artificial Intelligence in Healthcare: Ethics, Trust, and Values” – Laurie Ann Moennich • “Artificial Intelligence and Loneliness” – Alexander Zhang
2:00–3:00	Panel 3: Moderator Valerie De Wandel, JD
3:00–3:20PM	Break
3:20–3:25	INTRO SESSION 4: Moderator Benjamin Parviz, PhD student in Bioethics and Philosophy
3:25–3:45	“Data, Power, and the Clinical Encounter” – Alison Antes, PhD, MS
3:45–4:05	“The Evolving Role of Technology in Clinical Communication” – Bryan Sisk, MD
4:05–5:05	Panel 4: Moderator Benjamin Parviz, PhD student in Bioethics and Philosophy
5:05–6:00PM	Reception – Zodiac Room

WELCOME SPEAKER



Jason D. Keune, M.D., MBA, FACS is a surgeon, bioethicist and author who is an Associate Professor of Surgery and Health Care Ethics at Saint Louis University, and is the Executive Director of the Bander Center for Medical Business Ethics, which is housed in the School of Medicine at Saint Louis University. He earned his bachelor's degree and MD from Washington University in St. Louis and completed his General Surgery Residency and Fellowship in Minimally Invasive Surgery there also. He was the Emerson Clinical Scholar in Residence of the American College of Surgeons from 2009 to 2011 and obtained a Certificate in Professional Ethics from Washington University and a Master's in Business Administration from Saint Louis University during that time. He is board certified in General Surgery by the American Board of Surgery and is a Fellow of the American College of Surgeons. Dr. Keune has published in *The Annals of Surgery*, *Academic Medicine*, *The American Journal of Bioethics*, *Narrative Inquiry in Bioethics* and *Surgery* amongst others and has authored several textbook chapters on surgery and ethics. He is Co-Chair of the Committee on Leadership and Professional Development at the Society of American Gastrointestinal and Endoscopic Surgeons.

PANEL 1: INTRODUCTION AND MODERATOR



Brandy M. Fox is a PhD candidate in Health Care Ethics at Saint Louis University with a concentration in Empirical Research. She is originally from Wyoming and now lives in St. Louis with her husband and two children. Brandy holds a BA in Politics from the Catholic University of America and an MS in Health Care Ethics from Creighton University. Her main research interests are end of life ethics and decision making and the ethics of psychiatric care. Brandy is currently teaching two undergraduate classes at Saint Louis University: Foundations in Clinical Health Care Ethics and Ethics in Geriatric Care. Her current project is her dissertation about the ethics of suicide prevention for US military veterans. Brandy is a US Army veteran herself. She has also worked for Hospira Pharmaceuticals, the Sheridan (Wyoming) Department of Veterans Affairs Health Care System, and Creighton University's School of Pharmacy and Health Professions.

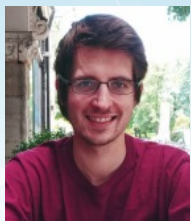


Mark Repenshek is currently the Vice President of Ethics and Church Relations for Ascension. He earned his Ph.D. in Health Care Ethics at Saint Louis University at the Center for Health Care Ethics and completed his Masters in Theological Studies at St. Francis Seminary in Milwaukee, WI. In addition to this role, Mark serves as adjunct faculty at Loyola University Chicago—Stritch School of Medicine Neiswanger Institute for Bioethics. He also serves Catholic Healthcare nationally by having served two terms on the CHRISTUS Health Mission and Ethics Committee of the Board of Directors, The Catholic Health Association's Vision (CHA) 2020 steering committee and served as Chair of the Theologian and Ethicist Advisory Council for CHA. Mark's research focuses on the intersection of Catholic moral and social teachings and modern debates in bioethics, organizational ethics for faith-based healthcare ministries, and outcomes-based quantitative analyses of ethics consultation. He has published articles in *The Journal of Clinical Ethics*, *The Hastings Center Report*, *The National Catholic Bioethics Quarterly*, *Nursing Ethics*, *American Journal of Bioethics*, *HEC Forum*, *Health Progress*, and *Healthcare Ethics USA*. He has co-authored a book in its second edition titled, *An Introduction to Healthcare Ethics: Theological Foundations, Contemporary Issues, and Controversial Cases*, through Anselm Academic. Mark is part of the inaugural class of 2011 Catholic Health Association's Tomorrow's Leaders Award. He is also a member of the American Society for Bioethics and Humanities and the Catholic Theological Society of America.



Terry Ziemniak, MS, FACHE, ISC2 has over 25 years' experience in the information security field with work ranging from security architecture, pen testing, operations, auditing, risk management, disaster preparedness and compliance. His most recent positions include 10 years leading security programs for multibillion dollar organizations. While spending most of his career in healthcare, he has experience working with a variety of organizations including military, financial, retail and manufacturing—sized from Fortune 100 down to “mom and pop” shops. Terry has achieved both the CISSP and FACHE certification and earned a master's degree in Information Security from DePaul University.

PANEL 2: INTRODUCTION AND MODERATOR



Martin Fitzgerald is a PhD candidate in bioethics and philosophy at SLU's Albert Gnaegi Center for Health Care Ethics. Previously, he earned a master's in philosophy from Duquesne University and a bachelor's in chemical engineering from Worcester Polytechnic Institute. His research focuses on the intersection between the empirical sciences and philosophy, with particular attention to biologically-informed philosophy, animal ethics, and nonhuman cognition. Marty's current projects include translating systems science into a theory of health for bioethics and expanding on the foundations of shared moral decision-making in the clinic. Outside of the academy, Marty enjoys spending time with his fiancée, playing chess, practicing sport, and conversation over drinks.



Michael S. Sinha MD, JD, MPH is Assistant Professor of Law in the Center for Health Law Studies at Saint Louis University School of Law. Prior teaching roles include Adjunct Faculty in the Beazley Institute for Health Law and Policy at Loyola University Chicago School of Law, Visiting Scholar in the Center for Health Policy and Law at Northeastern University School of Law, and Lecturer in Public Health at California State University, East Bay. He has continuing research relationships with the Harvard-MIT Center for Regulatory Science at Harvard Medical School, the Program On Regulation, Therapeutics, And Law (PORTAL) at Brigham and Women's Hospital, and the Centre for Advanced Studies in Biomedical Innovation Law (CeBIL) at the University of Copenhagen.

Medical publications have appeared in NEJM, JAMA, JAMA Internal Medicine, JAMA Network Open, Mayo Clinic Proceedings, Anesthesiology, CHEST, PLOS Medicine, Health Affairs, the American Journal of Public Health, and the American Journal of Bioethics. His legal scholarship includes articles in the Journal of Legal Medicine, the American Journal of Law & Medicine, the Journal of Law, Medicine & Ethics, the Harvard Law & Policy Review, the Food and Drug Law Journal, the Stanford Law & Policy Review, the Journal of Law and the Biosciences, the Hastings Law Journal, and the Minnesota Journal of Law, Science & Technology.



Mark Seiden, a programmer since the '60s, has worked with diverse companies and research organizations in software engineering and security writ large. He is Security Advisor to the Internet Archive, taught and participated in research—now with Columbia and UC Santa Cruz, before at UC Berkeley and Stanford, has been an expert in almost 50 criminal and civil cases, is a long-time member of the ICANN Security and Stability Advisory Committee (which worries about how names and numbers work on the Internet) and has participated in National Academy of Sciences studies on some trippy subjects. (Other longstanding interests include food and wine, piano music and mycology.) His Erdos number is 3.

LUNCH SPEAKER



Jeanne Carbone, after 25 years as a Special Educator, and with a background in Outdoor Education and Horticulture, Jeanne found her way to the world of Therapeutic Horticulture. As Supervisor of the programs for the Missouri Botanical Garden, she has the opportunity to interact with varying populations, with all the work driven by the belief that nature has the power to improve well-being.

PANEL 3: INTRODUCTION AND MODERATOR



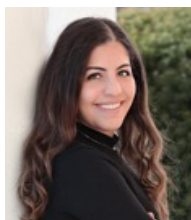
Valerie De Wandel, J.D. is a Saint Louis University J.D/PhD student currently finishing her Ph.D. in Health Care Ethics. In law school, she served as a lead editor of the Saint Louis University Journal for Health Law and Policy and legal intern. She is a licensed attorney in the state of Missouri. Her passion resides in bioethics, with her research interests focus on the overlap between law and bioethics, with a primary focus of psychiatric patient rights and care.



Benjamin Anom, MD. Bioethics is a Biomedical Ethicist (Public Health and Policy), Data Scientist, Statistician, Operations Research and Systems Analyst – Lean Six Sigma. Dr. Anom is a retired Army Officer who has received multiple graduate degrees in the fields of Business concepts and Entrepreneurial studies, Industrial Engineering, Applied Statistics, Data Analytics, and Biomedical Ethics. He recently obtained his doctoral degree in Biomedical Ethics from the Albany Medical Center. After retiring from the military, he has worked as a research analyst across multiple federal organizations. He served as an Operations Research, and Systems Analyst with The Research Analysis Center (TRAC) at Fort Leavenworth, KS. He also served as Senior Data Analyst at the US Transportation Command at Scott AFB, Illinois. Dr. Anom recently led a project at The United States Transportation Command (USTRANSCOM) where he was recognized as a data expert and was responsible for establishing the Command’s Enterprise Data Environment.

Dr. Anom currently works at the Veterans Affairs (VA) as a Senior Program Analyst/Health Science Officer. He provides oversight and coordination of the initiatives throughout the Veterans Health Administration specific to the full implementation of the VA’s Electronic Health Records Modernization. He also serves as an Adjunct Professor at the David D. Reh School of Business, Clarkson University, Schenectady, New York, where he teaches graduate students the fundamental methods in statistical analysis and data visualization as applied in healthcare. Dr. Anom’s research interests include the ethics of big data and artificial intelligence in Medicine, and the use of citizen’s data to achieve public health goals.

STUDENT ABSTRACT PRESENTATIONS



Natalie Hardy is a PhD student and graduate assistant in the department of Health Care Ethics at Saint Louis University. Her research interests center upon neuroethics, disability ethics, and clinical ethics, and she aspires to become a clinical ethicist and/or professor of ethics after her training.



Alexander Zhang is a PhD student in Philosophy and Bioethics at Saint Louis University with area of interest in political philosophy and ethics. He likes cats.



Laurie Ann Moennich is a Research Program Manager at the Cleveland Clinic in Cleveland, OH. Laurie Ann oversees industry-sponsored and investigator-initiated device trials in the section of Cardiothoracic and Vascular Surgery within the Miller Family Heart, Vascular and Thoracic Institute. Laurie Ann Moennich has a Bachelor’s Degree in Public Health Education and Promotion from Kent State University, a Master’s Degree in Epidemiology from The University of South Florida, and is currently a PhD Candidate in the Clinical and Translational Science Program at Case Western Reserve University. Laurie Ann’s research focuses on the translation of discoveries made in clinical trials to direct patient care and development of pathways for successful implementation. She has a particular interest in the areas of digital health, telemedicine, and AI-enabled technologies, with an appreciation for the importance of a systems thinking approach to modeling complex issues in clinical research and implementation science.

PANEL 4: INTRODUCTION AND MODERATOR



Benjamin Parviz is a Ph.D. student at Saint Louis University, studying Philosophy & Bioethics in the philosophy department and in the Albert Gnaegi Center for Health Care Ethics. Presently, his primary research topic is hope, and he has recently written on hope in the contexts of law, technology, clinical research, transhumanism, and virtue ethics, and on hope's relationship with moral motivation. Currently he is researching hope according to Augustine of Hippo, and also hope with respect to physician assisted suicide / medical aid in dying. He holds a B.A. in Theology from Concordia University Chicago (2010), an M.A. in Theological Studies from Saint Louis University (2013), and an M.A. in Philosophy from University of Missouri - St. Louis (2021). He is an adjunct member of the faculty at Lewis and Clark Community College in Godfrey, Illinois, where he teaches philosophy. Formerly, he taught theology at Lutheran High School in St. Peters, Missouri. He resides in the Dogtown neighborhood of St. Louis with his wife April and their two daughters Eulalia and Hazel.



Alison L. Antes, PhD, MS is an Associate Professor of Medicine at Washington University School of Medicine and faculty in the Bioethics Research Center. She is an industrial-organizational psychologist specializing in ethics in research and healthcare. Dr. Antes conducts federally-funded research on decision-making and leadership practices that foster rigorous, responsible research in scientific teams. She also conducts empirical bioethics research on patient perceptions of healthcare innovations driven by data science and artificial intelligence. She is interested in how the growing use of data and technology in healthcare could exacerbate inequities or mitigate longstanding access and equity issues.



Bryan Sisk, MD, MSCI is an assistant professor in pediatric hematology and oncology at Washington University School of Medicine, as well as Director of Research at the Bioethics Research Center. Sisk completed his MD at the Cleveland Clinic Lerner College of Medicine at Case Western Reserve University, and completed his subsequent clinical training at St. Louis Children's Hospital and Washington University. Dr. Sisk also completed the Mentored Training Program in Clinical Investigation (MTPCI) and earned a Master of Science in Clinical Investigation (MSCI) from Washington University School of Medicine. Dr. Sisk's research focuses on identifying, measuring, and intervening upon communication functions in serious pediatric illness. He is especially interested in the evolving role of technology in the way clinicians and families interact and communicate in serious pediatric illness.