



SAINT LOUIS
UNIVERSITY™

— EST. 1818 —

CHAIR & PROFESSOR

Department of Health Management and Policy

Saint Louis University IS A CATHOLIC, JESUIT INSTITUTION that values academic excellence, life-changing research, compassionate health care and a strong commitment to faith and service.

Founded in 1818, the University fosters the intellectual and character development of nearly 14,000 students on two campuses in St. Louis, Missouri and Madrid, Spain. Saint Louis University continues to move forward with an unwavering commitment to a higher purpose, a greater good.

The College for Public Health and Social Justice

Our mission: *Based on our commitment of service to others, we improve health and well-being locally, nationally, and internationally through unique interdisciplinary approaches that inspire students, generate knowledge, and engage individuals and communities.*

The College consists of five traditional public health departments and the School of Social Work. The College is one of 57 schools of public health accredited by the Council on Education for Public Health (CEPH) - the field's highest accreditation.



U.S. News and World Report ranked the College's CAHME-accredited Master of Health Administration (est. 1947) program No. 7. The College for Public Health and Social Justice earned the No. 23 spot in the 2016 Best Schools of Public Health rankings, while the School of Social Work ranks at No. 47- the top 20th percentile.



Outstanding Educational Programs

The College offers a wide range of degrees to its over 1,100 students:

- 6 undergraduate degrees
- Accelerated programs with three of our masters degrees
- 6 masters, 13 dual-degree masters, 1 executive master (executive MHA)
- Ph.D. programs in public health studies and social work
- Certificates in applied behavior analysis and biosecurity and disaster preparedness.

Department of Health Management & Policy

Our mission: *To facilitate the transformation of motivated and service-oriented early careerists and working health care professionals, through practice-integrated learning, into highly competent, ethical leaders across the health industry.*

The Master of Health Administration program combines a nationally recognized competency-based curriculum with exceptional internship experiences to prepare career-ready graduates for leadership roles across the health care industry.

With over 30 full-time and adjunct professors, our faculty bring executive-level experience and connections, innovative research and a passion for teaching. Their expertise spans the health care sector, offering diverse and impactful courses to our students. ▶

Department of Health Management & Policy (cont'd)



"Through our M.H.A. and M.P.H.-H.M.P. programs, we are intentional about emphasizing throughout the formation of our students the importance of ethical and just leadership. That is embodied in a variety of ways throughout our department and exemplified in our faculty and students."

KRISTIN WILSON, PH.D.
DIRECTOR, MASTER OF PUBLIC HEALTH IN
HEALTH MANAGEMENT AND POLICY PROGRAM

Our faculty represent diverse disciplines including health services research, finance, economics, and business.



KIMBERLY ENARD, PH.D., M.B.A., M.S.H.A.,
FACHE

ASSISTANT PROFESSOR

An American College of Healthcare Executives fellow, Dr. Enard is a sought-after consultant in planning, implementing and evaluating patient-centered care programs. Her research focuses on addressing health disparities throughout the health care system.



RONALD LEVY, M.H.A.

EXECUTIVE IN RESIDENCE

Mr. Levy brings experience as the CEO of a large health care system as well as service in the public sector as the director of the Missouri Department of Social Services. He teaches health care organization and management.

Health Management & Policy Degree Programs

The Department offers a wide range of degrees:

- Bachelor of Science in Health Management
- Master of Health Administration (ranked No. 7)
- Executive Master of Health Administration
- M.P.H. - Health Management & Policy concentration
- M.P.H./J.D. dual degree*
- M.H.A./J.D. dual degree*
- M.H.A./M.B.A. dual degree
- Ph.D. in Public Health Studies – Health Management and Policy concentration

* Health law program ranked No. 1 by *U.S. News & World Report*

Students in the Department of Health Management & Policy



- The Department has 185 students, and our student body is diverse: 62% are women and 17% are persons of color.
- One of the oldest MHA programs in the United States; there are 90 students in the two-year program.
- 98% of our MHA graduates are placed within three months of graduation.
- The Executive MHA has grown to 20 students per cohort.
- Students have been recipients of competitive fellowships, including the Winston Health Policy fellowship and scholarship.
- The undergraduate major in health management-started in 2009-has seen rapid growth in number of students.



"SLU's M.H.A. program provided tools to help me succeed as a health care leader, but more importantly, it helped foster a professional network that I'll have throughout my career."

RYAN CLARKE, M.H.A. 2010
ADMINISTRATIVE DIRECTOR, MD
ANDERSON CANCER CENTER

Research

SLU is classified as a Research University/High Research Activity institution by the Carnegie Foundation, a classification given to only seven Catholic universities nationwide. *U.S. News & World Report* ranks SLU among the top research universities in the country.

HMP faculty have diverse research interests that include: Medicare/Medicaid, Health Reform, Community Benefit, Policy, Workforce Development, Healthcare Industry, Quality of Care Measurement & Improvement, Economics. Many faculty focus their research on social justice. ▶

The HMP Department has received over \$2 million in external funding (2012-2016) from various funding agencies (CDC, HRSA, Robert Wood Johnson Foundation, and local foundations) and contracts. Junior faculty are poised to become leaders in their field.

How to apply

For more information, contact:

Mario Schootman, Ph.D.

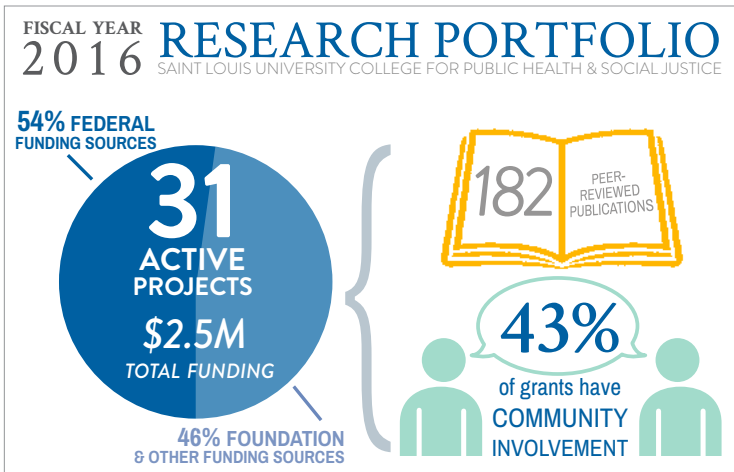
Search Committee Chair

schootm@slu.edu

314-977-8133

To apply, visit: <https://jobs.slu.edu/postings/10717>

Saint Louis University is an inclusive community that welcomes all people, regardless of race, ethnicity, sex, gender, disability, veteran status, national origin, faith, sexual orientation, class or ideology.



Why St. Louis?

With one of the nation's most dynamic health care markets, St. Louis has five major health systems (Ascension, SSM, Centene, BJC, Mercy), two academic medical centers (SLU Hospital, Barnes-Jewish Hospital), the largest pharmacy benefit company in the United States (Express Scripts), and a unique model for safety net services for the underserved and uninsured (St. Louis Regional Health Commission).

St. Louis is the fastest-growing city in the country in terms of new technology jobs, and is home to an increasingly diverse and influential cohort of business, industrial and health care organizations reliant on cutting edge data science.

Learn more about St. Louis - links

- [Things to do in St. Louis - video](#)
- [St. Louis Visitors Guide](#)

