

SELECTED RECENT ACQUISITIONS
SAINT LOUIS UNIVERSITY MUSEUM OF ART

School of Jacques-Louis David (1748-1825)

Portrait of Bishop Louis Guillaume Valentin DuBourg
[Founder of Saint Louis University].

Oil on canvas, ca. 1815.

Gift of William Page and Beverly Dame III.



Robert Motherwell (1915-1991)

The Red and the Black, #28.

Paper collage on etching and aquatint, 1987.

Gift of the Honorable Thomas F.
and Barbara Eagleton.



Manner of Stanislas Lepine (1836-1892)

Terrassiers, au Trocadero (The Laborers of the Trocadero).

Oil on panel, ca. 1925-50

Gift of Mark Landis in memory of Lt.
Cmdr. Arthur Landis, Jr.



Jasper Johns (b. 1930)

Untitled (Coca-Cola).

Lithograph, 1971.

Gift of the Honorable Thomas F.
and Barbara Eagleton.



SAINT LOUIS
UNIVERSITY

SELECTED RECENT ACQUISITIONS
SAINT LOUIS UNIVERSITY MUSEUM OF ART

Jean-Baptiste-Emille Corot (1796-1875)

The Reed Gatherers

Oil on canvas, ca. 1855.

Gift of Opal Meyer Heatherman, in
memory of James M. Heatherman.



Kiki Smith (b. 1954)

Carriers.

Intaglio with hand applied watercolor, 2001.

Anonymous gift in memory of Reverend Paul C. Reinert, S.J.



Tom Wesselmann (1931-2004)

Julia Trying on Clothes.

Color silkscreen, 1997.

University Acquisition, supported by
Joan Hrubetz, R.N., Ph.D.



SELECTED RECENT ACQUISITIONS
SAINT LOUIS UNIVERSITY MUSEUM OF ART

Alex Katz (b. 1927)
Olympic Swimmer.
Color silkscreen, 1976.
University acquisition, 2007.



Elizabeth Murray (1940-2007)
Blue Body, 1986-1987.
Color lithograph, 1987.
University acquisition, 2007.



Lee Bontecou (b. 1931)
Untitled, from Series Ten by Leo Castelli.
Screenprint on muslin laid on illustration board, 1968.
University acquisition, 2007.



Currier & Ives (American, mid-19th century)
Grand National Banners (Complete series, 1844-1876)
Lithograph with hand-applied color.
Gift of U.I. (Chick) and Cecelia Harris, 2007.



SELECTED RECENT ACQUISITIONS
SAINT LOUIS UNIVERSITY MUSEUM OF ART

Roy Lichtenstein (1923-1997)

Still life with Picasso.

Lithograph, 1973.

Gift of the Honorable Thomas F.
and Barbara Eagleton, 2007.



Paul Signac (1863-1935)

Le Trieux, 1927.

Gouache and water color over black chalk
on paper laid down on board.

Gift of Mark Landis in memory
of Lt. Cmdr. Arthur Landis, Jr.



Luis Jiménez (1940-2006)

Rodeo Queen Study.

Colored pencil on paper in pastel colors, unique, 1972.

Gift of Judith and Adam Aronson.



SELECTED RECENT ACQUISITIONS
SAINT LOUIS UNIVERSITY MUSEUM OF ART

John Chamberlain (b. 1927)

Flashback III.

Color lithograph, 1987.

University acquisition with partial funding
from Dr. Judith Aronson, 2008.



Max Scharf (b.1933)

Let the Games Begin (#103)

Acrylic on canvas, 1992.

Gift of Elizabeth and Paul Zurlinden, 2007.



James Rosenquist (b. 1933)

Miles

Screenprint with air brush, 1976.

University acquisition with partial funding
from Dr. Judith Aronson, 2008.



SELECTED RECENT ACQUISITIONS
SAINT LOUIS UNIVERSITY MUSEUM OF ART

Frank Stella (b. 1936)

Sanbornville (from *Eccentric Polygons*).
Color lithograph and screenprint, 1974
University acquisition with partial funding
from Dr. Judith Aronson, 2008.



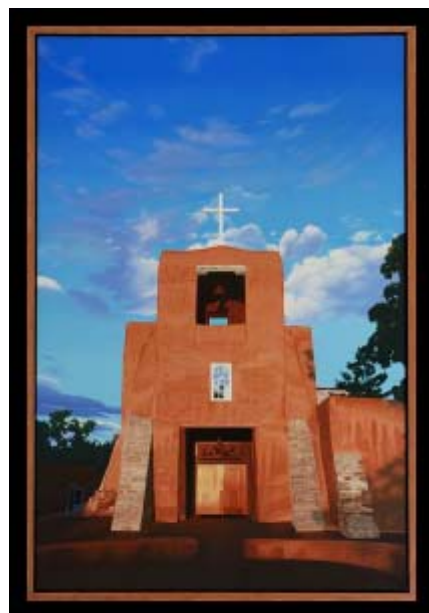
Ed Paschke (1939-2004)

Kontata.
Color lithograph, 1984.
University acquisition with partial funding
from Dr. Judith Aronson, 2008



Robert Forbes (b. 1948)

San Miguel Mission.
Oil on canvas, 2006.
Gift of artist, 2008.

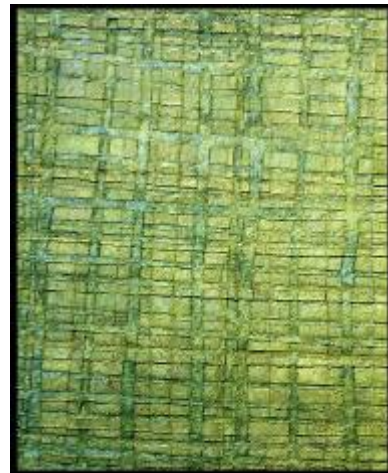


SELECTED RECENT ACQUISITIONS
SAINT LOUIS UNIVERSITY MUSEUM OF ART

Leiko Ikemura (b. 1951)
Untitled (Orange).
Oil on linen, no date.
University acquisition, 2006.



Leiko Ikemura (b. 1951)
Untitled (Green).
Oil on linen, no date.
University acquisition, 2006.



Chinese Doctor's Lady
Ivory with ink, ca. 1850-1900.
Gift of John S. and Jutta Karnstedt
Ferretti, 2007.



“George Washington, Standing at Tomb, Scroll in Hand” Tea Service.
Ceramic with applied transfer under cobalt blue glaze.
Enoch Wood & Sons, ca. 1818.
Gift of Warren Lorella and Dr. Jacob Kress, 2007.



SELECTED RECENT ACQUISITIONS
SAINT LOUIS UNIVERSITY MUSEUM OF ART

Jeffrey Ripple (b. 1962)

Blue Hyacinth. Oil on paper, 2005.

June Dahlia. Oil on paper, 2005.

Gift of Helen Ripple

Brice Marden (b. 1934)

Etchings to Rexroth 15, 1986

Etchings to Rexroth 16, 1986

Etching with aquatint on Rives BFK paper

University acquisition, 2006

Sean Scully (b. 1945)

Santa Barbara #15. Monotype, 1987.

Gift of the Honorable Thomas F. and Barbara Eagleton, 2006.

Albert Rafols Casamada (b. 1923)

Untitled, 1982.

Pastel on paper.

University acquisition, 2006

Georg Herold (b. 1947)

Untitled Figure, 1996.

Drawing on paper.

University acquisition, 2006.

Ari Marcopoulos (b. 1957)

Stockholm Nights, 1999.

Photograph.

University acquisition, 2006

Lynn Chadwick (1914-2003)

Reclining Form, 1969

Lithograph.

University acquisition, 2006.

Markus Lupertz (b.1941)

Untitled portrait, undated.

Mixed media.

University acquisition, 2006

Günter Forg (b. 1952)

Untitled (Blue), 1988.

Untitled (Green), (1988)

Oil stick on paper.

University acquisition, 2006.

Judy Pfaff (b. 1946)

China, 2006.

Photogravure, etching, digital, wax, perforations

Anonymous gift in memory of Reverend Paul C. Reinert, S.J., 2006.



SELECTED RECENT ACQUISITIONS
SAINT LOUIS UNIVERSITY MUSEUM OF ART

Claes Oldenburg (b. 1929)

Arched Soft Screw as Building (The Soft Screw), 1976.

Lithograph.

University acquisition, 2007.

Nancy Newman Rice

Santorini Rocks, 2004.

Oil on canvas.

Gift of artist, 2007

Kiki Smith (b. 1954)

Constellations, 1996.

Lithograph in colors with flocking.

University acquisition, 2007.

Alice Neel (1900-1984)

Evan's Twins, 1982.

Color screenprint.

University acquisition with partial funding
from Dr. Judith Aronson, 2008.

Philip Pearlstein (b. 1924)

Two Nudes with Hammock, 1974.

Color lithograph.

University acquisition with partial funding
from Dr. Judith Aronson, 2008.

Christo and Jeanne Claude (b. 1935)

The Gates Central Park, New York City, 1979-2005, 2005.

Photolithograph.

Gift of John and Sue Suwalsky, 2006.

